

1/2" drive - In chrome-vanadium steel - Chromed

METRIC SIZES

Long version with hexagonal socket with Flank Profile - Overall length 77 mm

For nuts	mm	13	14	15	17	19	22
Code	A 3116	1113	1114	1115	1117	1119	1122
A 3116/11	Each €						

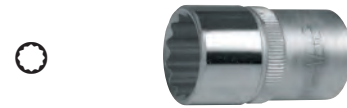
12,5 mm



AMERICAN SIZES

Short version with polygonal socket - DIN 3124

For nuts	inches	3/8	7/16	1/2	9/16	19/32	5/8	11/16	3/4	25/32
Code	A 3116	2201	2202	2203	2204	2205	2206	2207	2208	2209
A 3116/22	Each €									
For nuts	inches	13/16	7/8	15/16	1	1 1/16	1 1/8	1 3/16	1 1/4	
Code	A 3116	2210	2211	2212	2213	2214	2215	2216	2217	
A 3116/22	Each €									



With socket for "TORX" screws

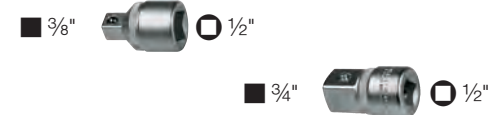
Opening "TORX"	E	10	12	14	16	18	20	22	24
Code	A 3116	2510	2512	2514	2516	2518	2520	2522	2524
A 3116/25	Each €								



1/2" drive - In chrome-vanadium steel - Chromed

Adaptors - pcs. 1

Drive	1/2" - 3/8"	1/2" - 3/4"
Code	A 3116 3001	A 3116 3002
A 3116/3	Each €	



Set of 6 adaptors

3 small-to-large adaptors with 1/4" and 3/8" - 3/8" and 1/2" - 1/2" and 3/4" drives
3 large-to-small adaptors with 3/8" and 1/4" - 1/2" and 3/8" - 3/4" and 1/2" drives
In a heat-formed case suitable for putting the set in trolley drawers

Code A 3116 3600	A 3116/36	Each €		1
------------------	------------------	--------	--	---



Universal joint

Code A 3116 4000	A 3116/4	Each €		10
------------------	-----------------	--------	--	----



Reversible ratchet with reversible and removable square drive

Overall length 270 mm

Code A 3116 6000	A 3116/6	Each €		1
------------------	-----------------	--------	--	---



Reversible ratchet with safety locking and quick release

Quick socket release with push button and spring ball retention

Overall length 275 mm

Code A 3116 7000	A 3116/7	Each €		1
------------------	-----------------	--------	--	---



Fine toothed reversible ratchet, with 72 teeth

Minimum 5° working angle, ideal for use in tight spaces

Overall length 275 mm

Code A 3116 7500	A 3116/75	Each €		1
------------------	------------------	--------	--	---



Fine tooth lever, with 72 teeth

Lever bent at 90°

Overall length 255 mm

Code A 3116 9000*	A 3116/9	Each €		1
-------------------	-----------------	--------	--	---



* to be discontinued