

**ABC TOOLS** Hand and dovetail saws

In special steel - Sharpened and ready to use

**With two-component, closed, synthetic resin grip**

Blade with special sharpening, induction-tempered teeth for a clean cut and high performance

6 pcs.

Blade length	mm	300	350
Code		B 5469 0300	B 5469 0350
<b>B 5469</b>	Each €		

**With straight grip**

Thin teeth - Grip in lacquered wood - 12 pcs.

Blade length	mm	250	300
Code		B 5470 0250	B 5470 0300
<b>B 5470</b>	Each €		

**With bent grip (to the right)**

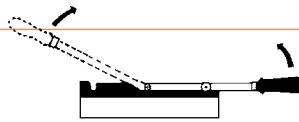
Blade length 250 mm

Code B 5472 0250	<b>B 5472</b>	Each €	6
------------------	---------------	--------	---

**With foldable grip**

For left and right-hand use - Blade length 250 mm

Code B 5474 0250	<b>B 5474</b>	Each €	6
------------------	---------------	--------	---

**ABC TOOLS** Veneer saw

In special steel

With wooden hand grip

Overall length 190 mm

Code B 5486 0000	<b>B 5486</b>	Each €	6
------------------	---------------	--------	---

**Spare blade** for saws B 5486 - Overall length 75 mm

Code B 5487 0000	<b>B 5487</b>	Each €	6
------------------	---------------	--------	---

**ABC TOOLS** Jigsaws

In special steel

**With two-component synthetic resin grip**

Blade with special sharpening, induction-tempered teeth for a clean cut and high performance

Blade length 300 mm

Code B 5490 0000	<b>B 5490</b>	Each €	6
------------------	---------------	--------	---

**With wooden grip**

With fixed blade length 300 mm

Code B 5491 0000	<b>B 5491</b>	Each €	6
------------------	---------------	--------	---

**ABC TOOLS** Universal hand saw

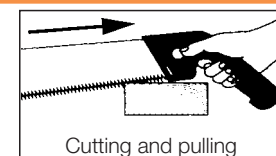
"PULLSAW" model for cutting and pulling (towards the operator)

Suitable for sawing natural, veneered and building wood, plywood and plastics

**Flexible blade** with 14 teeth per inch in carbon steel, tempered back, 300 mm length**Teeth with 3 diamond sharpened** cutting edges for a neat, quick and safe cut

Comfortable hand grip in synthetic resin, with blade-release button

Code B 5495 0000	<b>B 5495</b>	Each €	1
------------------	---------------	--------	---

**Spare blade** length 300 mm

Code B 5495 1000	<b>B 5495/1</b>	Each €	1
------------------	-----------------	--------	---