

## Deburring wheel brushes

Suitable for deburring, glazing, roughening, descaling, removing mold, enamels, etc.  
High density brushes with short "T" trim length for more aggressive action and maximum cut



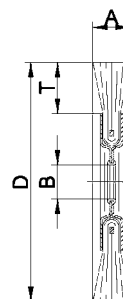
### Can be mounted in multiples

To increase the work area, several brushes can be combined on the same shaft

#### osborn - Heavy-duty

With **high-strength crimped steel wire** Ø 0,30 mm - **Narrow face width**

Diameter D	mm	100	125	150	178	200	250
Code	D 4054 ....	1100	1125	1150	1178	1200	1250
<b>D 4054/1</b>	Each €						
Width A approx.	mm	13	15	16	18	19	22
Wire free length T	mm	23	35	32	45	32	35
B hole	mm	16	16	16	20	20	25
Max speed	rpm	8000	6000	6000	6000	4500	3600



### For individual use

Supplied with a set of adapters to fit various holes

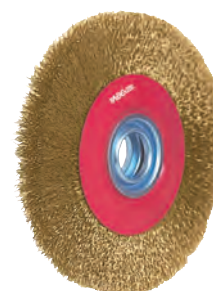
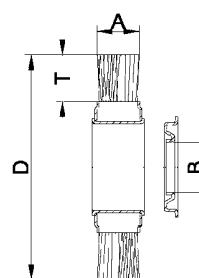
#### ABC tools

With **high-strength crimped brass-plated steel wire** Ø 0,30 mm

#### D 4054/2 - Narrow face width

#### D 4054/4 - Large face width

Diameter D	mm	100	125	150	200
Code	D 4054 2100	D 4054 2125	D 4054 2150	D 4054 2200	
<b>D 4054/2</b>	Each €				
Code	D 4054 4100	D 4054 4125	D 4054 4150	D 4054 4200	
<b>D 4054/4</b>	Each €				
Width A approx. mm	D 4054/2	16	18	18	20
Width A approx. mm	D 4054/4	20	25	25	25
Wire free length T	mm	17	30	29	42
B hole	mm	20		32	
Adapters for hole Ø	size	1/2" - 5/8"		13 - 15 - 16 - 19 - 20 - 7/8" - 1"	
Max speed	rpm	8000	6000		4500



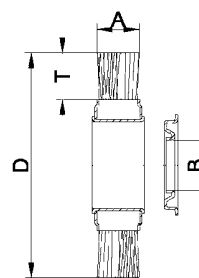
#### osborn - Heavy-duty

With **high-resistance crimped steel wire** Ø 0,30 mm

#### D 4054/5 - Large face width

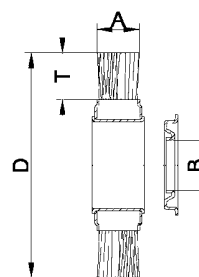
#### D 4054/7 - Extra large face width

Diameter D	mm	75	100	125	150	178	200	250	300
Code	D 4054 ....	5075	5100	5125	5150	5178	5200	5250	5300
<b>D 4054/5</b>	Each €								
Code	D 4054 ....	—	—	7125	7150	7178	7200	7250	—
<b>D 4054/7</b>	Each €								
Width A approx. mm	D 4054/5	19	22	28	25	26	28	35	32
Width A approx. mm	D 4054/7	—	—	30	38	38	38	48	—
Wire free length T	mm	16	23	30	30	38	38	47	50
Hole B	mm	20	20	20	32	32	32	32	32
Reducers for hole Ø	size	1/2" - 5/8"		13 - 15 - 16 - 19 - 20 - 7/8" - 1"				—	
Max speed	rpm	10000	8000	6000		4500		3600	3000



### With stainless steel wire - INOX

Diameter D	mm	150	200	250
Code	D 4054 6150	D 4054 6200	D 4054 6250	
<b>D 4054/6</b>	Each €			
Width A approx.	mm	21	20	28
Wire free length T	mm	25	38	47
B hole	mm	32	32	32
Adapters for hole Ø	size	13 - 15 - 16 - 19 - 20 - 7/8" - 1"		
Max speed	rpm	6000	4500	3600



### Hole with double drive slot - Extra large face width

Suitable for bench grinders and for deburring pipes, bars and profiles

**High-strength crimped steel wire** Ø 0,35 mm

#### Diameter «D» 250 mm

"A" face width 55 mm - Wire free length "T" 45 mm

Supplied ready-to-fit and balanced

B hole Ø	mm	50,8
Code		D 4054 9508
<b>D 4054/9</b>	Each €	
Drive slot dim. S x L	mm	13,2x7,1
Max speed	rpm	3600

