

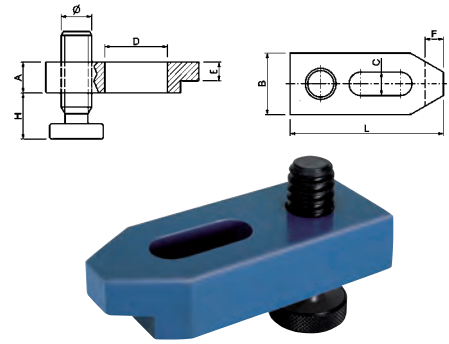
# ABC TOOLS Machine clamps

In special tempered steel - Painted finished

## Straight type with adjustment screw and stepped beveled end - DIN 6314 AV

Square-pitch screw

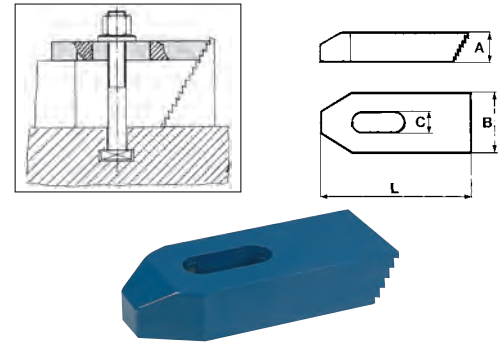
For threaded screws (C) M		12-14		16-18		20-22		24	
Code	G 3748 ....	6312	6313	6316	6317	6320	6321	6323	6324
<b>G 3748/63</b>	Each €								
Length L	mm	125	160	160	200	160	200	200	250
Width B	mm	40	40	50	50	60	60	70	70
Height A	mm	20	20	25	25	30	30	40	40
Adjust. height h	mm	15±50	15±50	15±70	15±70	15±70	15±70	15±70	15±70
Dimension E	mm	12	12	15	15	15	15	25	25
Weight	kg	0,8	1	1,6	2	2,1	2,6	3,7	4,6



## Type with stepped teeth

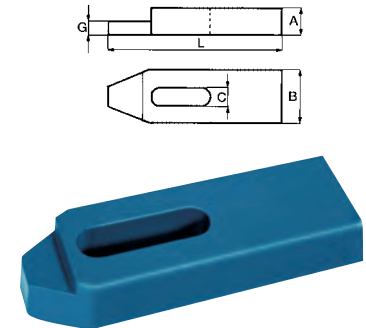
Used with the aid of stepped supports G 3749/2

For threaded screws (C) M		8	10	12-14	16-18	20-22
Code	G 3748 7008	G 3748 7010	G 3748 7012	G 3748 7016	G 3748 7020	
<b>G 3748/7</b>	Each €					
Length L	mm	60	80	100	125	160
Width B	mm	25	30	40	50	60
Height A	mm	12	15	20	25	30
Weight	kg	0,1	0,2	0,5	0,9	1,7



## Straight type with lowered end

For threaded screws (C) M		8	10	12-14	16-18	20-22			
Code	G 3748 ....	8008	8010	8012	8013	8016	8017	8020	8021
<b>G 3748/8</b>	Each €								
Length L	mm	60	80	100	125	125	160	160	200
Width B	mm	25	30	40	40	50	50	60	60
Height A	mm	12	15	20	20	25	25	30	30
Weight	kg	0,1	0,2	0,5	0,6	1	1,2	1,8	2,2



# ABC TOOLS Stepped supports

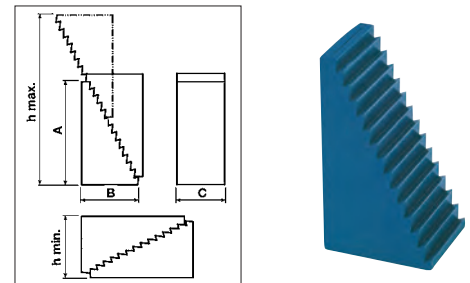
In tempered steel - DIN 6500

Painted finish

Tooth height: vertical 4,65 mm - horizontal 2,3 mm

To be used in pairs or individually with clamp G 3748/7

Height A	mm	31	64	128
Code		G 3749 2031	G 3749 2064	G 3749 2128
<b>G 3749/2</b>	Each €			
Height min-max*	mm	25±53	41±105	70±208
Base B	mm	22	36,5	68
Thickness C	mm	30	30	30



## Assortment consisting of 20 stepped supports

8 stepped supports G 3749/2 height 31 mm

8 stepped supports G 3749/2 height 64 mm

4 stepped supports G 3749/2 height 128 mm

In wooden box, dimensions 160x300 mm

Weight 8,6 kg

Code G 3749 9000	<b>G 3749/9</b>	Each €	1
------------------	-----------------	--------	---

