

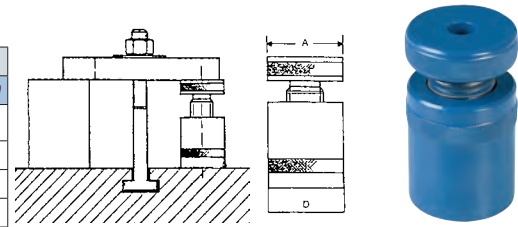
ABC TOOLS Adjustable screw supports

In hardened steel

With screw with trapezoidal thread, pitch 30x6

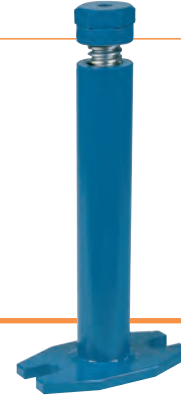
Short version

| Height min. - max. | mm | 38 - 50 | 50 - 70 | 70 - 100 | 100 - 140 | 140 - 210 |
|--------------------|--------|--------------------|--------------------|--------------------|--------------------|--------------------|
| Code | | G 3750 1050 | G 3750 1070 | G 3750 1100 | G 3750 1140 | G 3750 1210 |
| G 3750/1 | Each € | | | | | |
| Ø support head A | mm | 34 | 50 | 50 | 65 | 70 |
| Base diameters D | mm | 34 | 50 | 50 | 70 | 80 |
| Max capacity | kN | 20 | 60 | 60 | 105 | 180 |
| Weight | kg | 0,2 | 0,7 | 0,9 | 2,5 | 4,7 |



Long version - «ATLAS» Model

| Height min. - max. | mm | 100-140 | 140-200 | 200-320 | 320-550 |
|--------------------|--------|--------------------|--------------------|--------------------|--------------------|
| Code | | G 3750 2140 | G 3750 2200 | G 3750 2320 | G 3750 2550 |
| G 3750/2 | Each € | | | | |
| Slot width | mm | 18 | 18 | 22 | 22 |
| Base dimensions | mm | 90x160 | 90x160 | 90x160 | 90x160 |
| Max capacity | kN | 60 | 60 | 40 | 25 |
| Weight | kg | 1,8 | 2,2 | 4 | 4,9 |



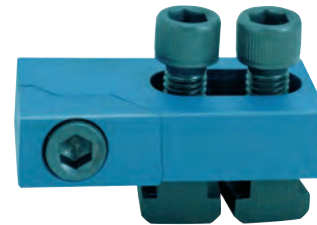
ABC TOOLS Side locking clamps

In special hardened steel

Suitable for fastening pieces in both horizontal and vertical positions

Complete with T-head screws with hollow head - Supplied in pairs (1 right and 1 left)

| For T slot | M | 14 | 16 | 18 | 22 |
|-----------------|------------|--------------------|--------------------|--------------------|--------------------|
| Code | | G 3750 8014 | G 3750 8016 | G 3750 8018 | G 3750 8022 |
| G 3750/8 | Per pair € | | | | |
| Length | mm | 80 | 100 | 100 | 140 |
| Width | mm | 40 | 50 | 50 | 78 |
| Thickness | mm | 20 | 25 | 25 | 30 |
| Weight | kg | 1,1 | 2 | 2,1 | 5,5 |



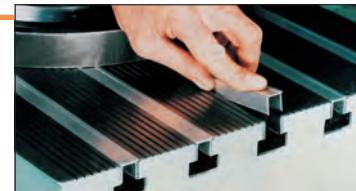
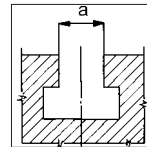
Protections for "T" slots

In aluminium

Using protections prevents chips from falling into the slots and the subsequent loss of time to clean them out

They can easily be removed after completing work

Total length 1000 mm



| For slots "a" | mm | 14 | 16 | 18 |
|-----------------|--------|--------------------|--------------------|--------------------|
| Code | | G 3750 9014 | G 3750 9016 | G 3750 9018 |
| G 3750/9 | Each € | | | |
| Weight | g | 100 | 120 | 135 |
| For slots "a" | mm | 20 | 22 | 28 |
| Code | | G 3750 9020 | G 3750 9022 | G 3750 9028 |
| G 3750/9 | Each € | | | |
| Weight | g | 150 | 165 | 200 |

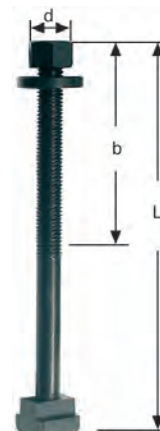
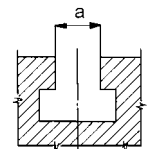


ABC TOOLS Bolts complete with nuts and washers

In hardened steel, class 10,9 - Burnished and phosphate-coated finish

Each bolt is made up of: 1 stud G 3751/2, 1 slot nut G 3751/4, 1 hexagonal nut G3751/7 and 1 washer

| d (M thread) x L1 | mm | 8x63 | 8x100 | 10x60 | 10x80 | 10x100 | 10x120 | 12x63 | 12x100 |
|-------------------|-------------------|-------------|-------------|-------------|-------------|-------------|-------------|-------------|-------------|
| Code | G 3751 ... | 1082 | 1083 | 1101 | 1102 | 1103 | 1104 | 1121 | 1122 |
| G 3751/1 | Each € | | | | | | | | |
| Slot a | mm | 10 | 10 | 12 | 12 | 12 | 12 | 14 | 14 |
| Thread b | mm | 40 | 63 | 40 | 50 | 75 | 75 | 32 | 63 |
| d (M thread) x L1 | mm | 12x150 | 12x200 | 14x63 | 14x100 | 14x150 | 14x200 | 16x100 | 16x120 |
| Code | G 3751 ... | 1123 | 1124 | 1141 | 1142 | 1143 | 1144 | 1161 | 1162 |
| G 3751/1 | Each € | | | | | | | | |
| Slot a | mm | 14 | 14 | 16 | 16 | 16 | 16 | 18 | 18 |
| Thread b | mm | 95 | 95 | 32 | 63 | 100 | 110 | 50 | 75 |
| d (M thread) x L1 | mm | 16x150 | 16x250 | 18x150 | 20x120 | 20x150 | 20x200 | | |
| Code | G 3751 ... | 1163 | 1164 | 1182 | 1201 | 1202 | 1203 | | |
| G 3751/1 | Each € | | | | | | | | |
| Slot a | mm | 18 | 18 | 20 | 22 | 22 | 22 | | |
| Thread b | mm | 100 | 110 | 95 | 70 | 90 | 110 | | |



📦 1 piece