

NORMEX® Knurling tool holder for deforming knurling tool

Suitable for deforming knurling tools, high quality for industrial use

For axial and radial use

Supplied without knurling tools

Simple type for 1 knurling tool

Suitable for all types of knurling tools, particularly for pattern AA

Used for Ø from 8 to 200 mm

Total length 112 mm - Shank dimensions 14 mm

Code G 3977 1000	G 3977/1	Each €		1
------------------	----------	--------	---	---



Double type for 2 knurling tools

Suitable for knurling tool pattern AA, BL and BR for knurl patterns RAA, RGE at 30° and 45°

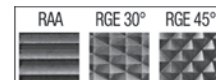
Used for Ø from 8 to 200 mm

Execution with oscillating head

Suitable for a better centring of the knurling tools on the machined piece

Total length 160 mm - Shank dimensions 25x18h mm

Code G 3977 1500	G 3977/15	Each €		1
------------------	-----------	--------	---	---

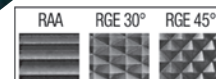
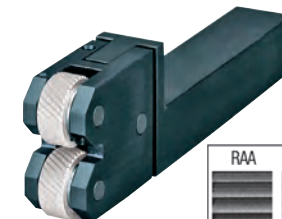


Execution with oscillating and reversible head

Suitable for a better centring of the knurling tools on the machined piece and for right and left machining

Total length 140 mm - Shank dimensions 25x20h mm

Code G 3977 2000	G 3977/2	Each €		1
------------------	----------	--------	---	---



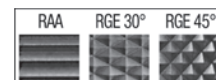
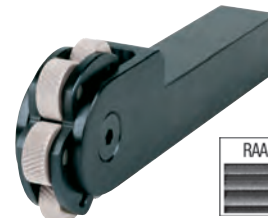
Multiple type for 3 pairs of knurling tools

Suitable for knurling tool pattern AA, BL and BR for knurl patterns RAA, RGE at 30° and 45°

Used for Ø from 8 to 200 mm

Total length 180 mm - Shank dimensions 25 mm

Code G 3977 4000	G 3977/4	Each €		1
------------------	----------	--------	---	---



Type with adjustable opening for 2 knurling tools

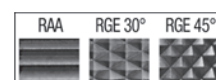
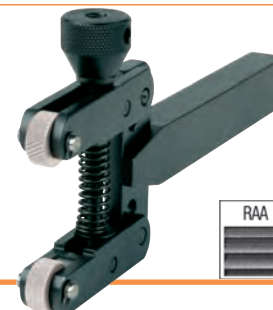
Compensated action, no risk of piece torsion

Suitable for knurling tool pattern AA, BL and BR for knurl patterns RAA, RGE at 30° and 45°

Diameter adjustment using a screw for use with Ø from 4 to 50 mm

Total length 220 mm - Shank dimensions 18x25h mm

Code G 3977 6000	G 3977/6	Each €		1
------------------	----------	--------	---	---



NORMEX® Knurling tool holder for cutting knurling tools

Suitable for cutting knurling tools

High quality for industrial use

Use on CNC lathes

Supplied without knurling tools

Type with head inclined at 30°, reversible

For axial use - For 1 knurling tool

Suitable for knurling tool patterns AA, BL30° and BR30° for knurl patterns types RAA, RBR and RBL at 30°

Used for Ø from 5 to 250 mm

Total length 150 mm - Shank dimensions 20x25h mm

Code G 3978 1000	G 3978/1	Each €		1
------------------	----------	--------	---	---



Double type for 2 knurling tools of the same shape

For right and left axial use

Suitable for knurling tool patterns AA, BL15°, BR15°, BL30° and BR30° for knurl patterns RGE 30°, RGE 45° and RGE 60°

Used for Ø from 5 to 250 mm

Total length 165 mm - Shank dimensions 20x25h mm

Code G 3978 4000	G 3978/4	Each €		1
------------------	----------	--------	---	---

