

Plain plug gauges

Go/no-go smooth finish type - DIN 2245 - H7 tolerance

Accuracy according to DIN EN ISO 1938-1

Side surface in special hardened steel - Knurled handle



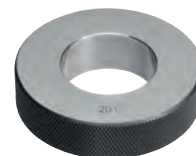
Nominal Ø	mm	2	3	4	5	6	7	8	9	10	11	12	13	14	15	16
Code	H 4535	1002	1003	1004	1005	1006	1007	1008	1009	1010	1011	1012	1013	1014	1015	1016
H 4535/1	Each €															
Nominal Ø	mm	17	18	19	20	21	22	23	24	25	26	27	28	29	30	32
Code	H 4535	1017	1018	1019	1020	1021	1022	1023	1024	1025	1026	1027	1028	1029	1030	1032
H 4535/1	Each €															
Nominal Ø	mm	33	34	35	36	38	40	42	44	45	46	48	50	52	55	58
Code	H 4535	1033	1034	1035	1036	1038	1040	1042	1044	1045	1046	1048	1050	1052	1055	1058
H 4535/1	Each €															
Nominal Ø	mm	60	62	65	68	70	72	75	78	80	82	85	88	90	95	100
Code	H 4535	1060	1062	1065	1068	1070	1072	1075	1078	1080	1082	1085	1088	1090	1095	1100
H 4535/1	Each €															

Setting ring gauges

Smooth ring, suitable for zero setting measuring instruments

DIN 2250 C

In special ground and hardened steel



Nominal Ø	mm	3	4	5	6	7	8	9	10	11	12	13	14	15	16	17	18
Code	H 4535	3003	3004	3005	3006	3007	3008	3009	3010	3011	3012	3013	3014	3015	3016	3017	3018
H 4535/3	Each €																
Nominal Ø	mm	19	20	21	22	23	24	25	26	27	28	30	32	33	34	35	36
Code	H 4535	3019	3020	3021	3022	3023	3024	3025	3026	3027	3028	3030	3032	3033	3034	3035	3036
H 4535/3	Each €																
Nominal Ø	mm	37	38	40	42	44	45	46	47	48	50	52	55	58	60	62	65
Code	H 4535	3037	3038	3040	3042	3044	3045	3046	3047	3048	3050	3052	3055	3058	3060	3062	3065
H 4535/3	Each €																
Nominal Ø	mm	68	70	72	75	80	82	85	88	90	95	98	100	125	150	175	200
Code	H 4535	3068	3070	3072	3075	3080	3082	3085	3088	3090	3095	3098	3100	3125	3150	3175	3200
H 4535/3	Each €																

Gauges for metric threads

For metric right thread DIN ISO 13

Sizes according to DIN 1502

Plug type - GO / NO-GO

H6 tolerance

M	DIN 13
---	--------



Threading	M	2	2,5	3	3,5	4	5	6	7	8	9	10
Code	H 4535	6002	6025	6003	6035	6004	6005	6006	6007	6008	6009	6010
H 4535/6	Each €											
Threading	M	12	14	16	18	20	22	24	27	30	33	36
Code	H 4535	6012	6014	6016	6018	6020	6022	6024	6027	6030	6033	6036
H 4535/6	Each €											

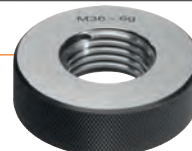
Ring type

g6 tolerance

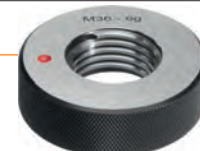
H 4535/8 - GO version

H 4535/9 - NO-GO version

M	DIN 13
---	--------



H 4535/8
GO



H 4535/9
NO-GO

Threading	M	2	2,5	3	3,5	4	5	6	7	8	9	10
Code	H 4535	8002	8025	8003	8035	8004	8005	8006	8007	8008	8009	8010
H 4535/8	Each €											
Code	H 4535	9002	9025	9003	9035	9004	9005	9006	9007	9008	9009	9010
H 4535/9	Each €											
Threading	M	12	14	16	18	20	22	24	27	30	33	36
Code	H 4535	8012	8014	8016	8018	8020	8022	8024	8027	8030	8033	8036
H 4535/8	Each €											
Code	H 4535	9012	9014	9016	9018	9020	9022	9024	9027	9030	9033	9036
H 4535/9	Each €											

Other sizes and threads available upon request