

## Surface plates



**In black granite** - Ground and lapped

**Extra type DIN 876/0 - Precision suitable for professional laboratories and control rooms**

For loads up to twice its own weight

**Very thick profile series, maximum resistance to bending**

Very hard and naturally stable, resistant to rust, acids, abrasives and dust, they don't need particular maintenance, they do not conduct electricity and are not magnetic

Each plate is packed in a wooden box and **supplied with a calibration certificate**

Length	mm	500	630	800	1000	1200
Code		H 4846 0500	H 4846 0630	H 4846 0800	H 4846 1000	H 4846 1200
<b>H 4846</b>	Each €					
Width x height	mm	315x70	400x80	500x100	630x140	800x160
Tolerance	µm	4,5	5	5,5	6	7
Weight	kg	33	60	120	264	461

Other dimensions available upon request

**Supporting frame suitable exclusively for surface plates H 4846**

Body in RAL 5021 blue, in tubular steel with rectangular section, electrically welded

With adjustable feet, anti-vibration

With 3 contact points and level measurement and 2 contact points to prevent tilting

Length	mm	630	800	1000	1200
Code		H 4847 0630	H 4847 0800	H 4847 1000	H 4847 1200
<b>H 4847</b>	Each €				
Width x height	mm	400x900	500x900	630x900	800x900
Weight	kg	26	29	34	41



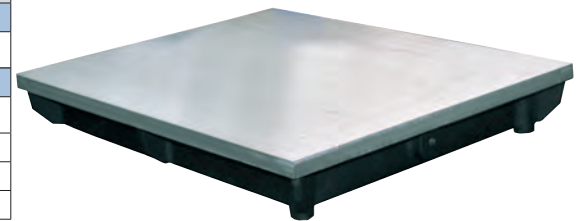
**ABC TOOLS** - **In normalized cast iron G 26**, high stability, ground surface and scraped finish

**H 4850** - Accuracy DIN 876 **Level II**

**H 4851** - Accuracy DIN 876 **Level I**

Length x width	mm	250x150	300x200	400x300	500x300	500x400	600x500	800x500
Code	H 4850 ....	0001	0002	0003	0004	0005	0006	0008
<b>H 4850</b>	Each €							
Code	H 4851 ....	0001	0002	0003	0004	0005	0006	0008
<b>H 4851</b>	Each €							
Planarity tolerance H 4850 ± mm		0,025	0,026	0,028	0,030	0,030	0,032	0,036
Planarity tolerance H 4851 ± mm		0,0125	0,013	0,014	0,015	0,015	0,016	0,018
Weight	kg	4,5	10	19	23	33	45	60

Other dimensions available upon request



## Parallel v-blocks

**Type without bracket - In special steel**

Support surfaces and ground V slots, accuracy ±0,02 mm

Dimensions	mm	75x75x60	100x80x60	120x90x60	150x100x65
Code		H 4853 0075	H 4853 0100	H 4853 0120	H 4853 0150
<b>H 4853</b>	Per pair €				
For shafts Ø	mm	5÷60	5÷80	5÷80	5÷85



**Type with bracket to fix cylindrical pieces - In tempered steel**

Precision ground and lapped **in pairs** - Planarity and parallelism tolerance ±0,004 mm

With two 90° angles - Supplied in wooden box

Dimensions	mm	50x40x40	75x55x55	100x75x75
Code		H 4854 0050	H 4854 0075	H 4854 0100
<b>H 4854</b>	Per pair €			
For shafts Ø	mm	5÷30	5÷50	7÷70



## Magnetic v-blocks

**High level of accuracy** - Tolerance ±0,004 mm - Ground and scraped finish

With V slots and lever for inserting and removing the magnet - Supplied in wooden case

**H 4855 - In steel**

**H 4856 - In tempered steel**

Dimensions	mm	70x45x70	80x67x96	100x70x96
Code		—	H 4855 0080	H 4855 0100
<b>H 4855</b>	Each €			
Code		H 4856 0070	H 4856 0080	H 4856 0100
<b>H 4856</b>	Each €			
For diameters	mm	2÷40	6÷66	6÷70
Adhesion force to the surface	N	600	900	1200
Adhesion force to cylindrical pieces	N	300	400	400

